

VersaCAMM

Roland DG Corporation

SP-540i / SP-300i



► Save Time and Money

Look at this print quality. It's just like we ordered it from a professional printer. Now we can take care of rush jobs, too, while saving money.

At meetings, we can display and review the quality of our graphics. With a VersaCAMM, we can present more ideas than ever.

We can print as many or as few items as we need, all while saving valuable time and money. There is no additional cost to die cut our labels and stickers, either!



■ Compare workflows: VersaCAMM versus traditional printer

Printer	Design	Create artwork	Proof	Make plates	Produce die	Print	Die cut	Deliver
VersaCAMM	Design	Create artwork	Proof	Print& Cut	Finished			

Bring your Promotional Activities to Life

The VersaCAMM Series is highly versatile for an endless range of applications. With just one device, you can produce decals, labels, stickers, posters, POP, vehicle wraps, heat transfers for apparel decoration and other promotional items of any size, on demand for both indoor and durable outdoor display. Use a wide variety of media, including adhesive-back vinyl, banner, paper, film, tarpaulin and heat transfer paper.

Achieve Professional Quality Results without Any Special Skills

With the VersaCAMM, you can achieve professional quality results even without any previous experience. Roland Intelligent Pass Control® technology automatically delivers the smooth gradations and flawless solid colors you require. Environmentally-friendly ECO-SOL MAX ink produces vivid colors for durable graphics.



Enjoy the Versatility of Printing and Digital Die-Cutting — All in One Device

With VersaCAMM, it's easy to create graphics in unique, custom shapes that add value and attract attention. Using Adobe Illustrator, you can easily draw contour cut lines in virtually any shape around your graphics. VersaCAMM will automatically print and cut your designs. Roland DG pioneered Print&Cut technology and today more than 86,000 Roland DG printer/cutters have been sold worldwide* making Roland the number one brand of Print&Cut inkjet devices.

*The total number of printer/cutters shipped from the company as of March 31, 2014.



**Print
& Cut**

► Improve Communication

Can you make this label darker and give it a more unique shape?
It's nice to be able to review and modify designs so quickly and easily!

It's just about ready!
The included RIP software is highly intuitive, making changes and corrections easy. Anyone can learn to use it, so why don't you give it a try next time?

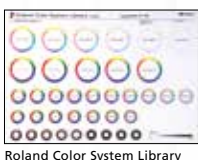
We can reproduce spot colors with total accuracy using the Roland Color System Library. We used to spend a lot of time adjusting color with our printer, but not anymore.

Intuitive Roland Operation Software Included

Every VersaCAMM comes with VersaWorks, our own RIP software for professional print quality. VersaWorks features the Roland Color System to accurately reproduce the spot colors you select from Roland Color charts and swatch books. Variable Data Printing makes it easy to create a series of individualized prints based on one template, with each print featuring its own photos, messages, numbers and names. In addition, VersaWorks estimates the ink usage and print time for each graphic so you can accurately monitor your time and costs. You can also update your software automatically through the Internet.

Easy to Use and Designed with Your Office in Mind

VersaCAMM is as easy to operate as any other equipment in your office. Its compact footprint is designed to fit comfortably into your office environment. ECO-SOL MAX ink comes in easy-handling sealed cartridges and are virtually odor free. You also get legendary Roland reliability and world-class service and support, including training through Roland workshops and seminars.



Roland
VersaWorks
RIP & PRINT MANAGEMENT SOFTWARE



► Produce Better, More Creative Ideas

Add the richness of rhinestone decorations to your heat-transfer apparel with a Roland EGX Series engraver and R-WearStudio design software.

POP

Banners and Posters

ID and Membership Cards

Product Decals

Heat Transfers for Apparel

Vehicle Graphics

I am designing various new logos for the event. We can quickly check to see if the colors match our staff uniforms.

Using Variable Data Printing, we can quickly produce custom labels and stickers including both the names of our winners and serialized numbers. We can also create staff ID badges that display each staff member's photo and name.

We can use these graphics for posters and also wrap the company cars with them to promote the business.

How about offering the first 100 customers bottles of wine with our original labels?

Backlit Signs

Floor Graphics

With the VersaCMM's automatic Print&Contour cut capabilities, there are no more problems cutting with scissors or a utility knife. I want to create everything I can imagine with the VersaCMM.

54" **SP-540i** 54" (1371mm) wide 4-Color (CMYK) ECO-SOL MAX 3 Inkjet Printer/cutter

30" **SP-300i** 30" (762mm) wide 4-Color (CMYK) ECO-SOL MAX 3 Inkjet Printer/cutter



VersaCMM



Take Control by Insourcing.

To succeed in today's competitive business environment, you need to produce quality promotional materials while saving as much time and money as possible. Like many companies, you may be outsourcing your graphics with mixed results. If this is the case, then it's time for a change. Start "insourcing" with a Roland VersaCAMM Series printer/cutter, the right choice for your business. With a VersaCAMM, you will enjoy uncompromising 4-color print quality, high speed performance, and automatic printing and contour cutting all in one device. Best of all, you'll be fully equipped to produce the quality labels, posters and other promotional materials your business demands. It's time to take control with the VersaCAMM.

VersaCAMM

Specifications		SP-540i		SP-300i	
Printing technology		Piezoelectric inkjet			
Media	Width	210 to 1,371 mm (8.3 to 54 in.)		182 to 762 mm (7.2 to 30 in.)	
	Thickness	Maximum 1.0 mm (39 mil) with liner, for printing		Maximum 0.4 mm (16 mil) with liner and 0.22 mm (9 mil) without liner, for cutting	
	Roll outer diameter			Maximum 180 mm (7 in.)	
	Roll weight	Maximum 30 kg (66 lb.)		Maximum 20 kg (44 lb.)	
	Core diameter	50.8 mm or 76.2 mm (2 in. or 3 in.)			
Printing/cutting width ^{*1}		Maximum 1,346 mm (53 in.)		Maximum 736 mm (29 in.)	
Ink cartridges	Types	ECO-SOL MAX 3 (ESL5), ECO-SOL MAX (ESL3)			
	Capacity	220cc (all), 440cc (ESL3), 500cc (ESL5)			
	Colors	Four colors (cyan, magenta, yellow, and black)			
Printing resolution (dots per inch)		Maximum 1,440 dpi			
Cutting speed		10 to 300 mm/s			
Blade force		30 to 300 gf			
Blade offset		0 to 1.5 mm (0 to 0.059 in)			
Software resolution (when cutting)		0.025 mm/step			
Distance accuracy (when printing) ^{*2 *3}		Error of less than ±0.3% of distance traveled, or ±0.3 mm, whichever is greater			
Distance accuracy (when cutting) ^{*3}		Error of less than ±0.4% of distance traveled, or ±0.3 mm, whichever is greater When distance correction has been performed (when the setting for [CUTTING MENU] - [CALIBRATION] has been made): Error of less than ±0.2% of distance traveled, or ±0.1 mm, whichever is greater			
Repetition accuracy (when cutting) ^{*3 *4}		±0.1 mm or less			
Alignment accuracy for printing and cutting ^{*3 *5}		±0.5 mm or less			
Alignment accuracy for printing and cutting when reloading media ^{*3 *6}		Error of less than ±0.5% of distance traveled, or ±3 mm, whichever is greater			
Media heating system ^{*7}		Print heater, setting range for the preset temperature: 30 to 45°C (86 to 112°F)		Dryer, setting range for the preset temperature: 30 to 50°C (86 to 122°F)	
Connectivity		Ethernet (10BASE-T/100BASE-TX, automatic switching)			
Power-saving function		Automatic sleep feature			
Power requirements		AC 100 to 120 V ±10%, 7.6 A, 50/60 Hz or AC 220 to 240 V ±10%, 3.9 A, 50/60 Hz		AC 100 to 120 V ±10%, 5.5 A, 50/60 Hz or AC 220 to 240 V ±10%, 2.8 A, 50/60 Hz	
Power consumption	During operation	Approx. 1,030 W		Approx. 730 W	
	Sleep mode			Approx. 14 W	
Acoustic noise level	During operation			64 dB (A) or less	
	During standby			40 dB (A) or less	
Dimensions	With Stand	2,310 (W) x 740 (D) x 1,125 (H) mm [90.9 (W) x 29.1 (D) x 44.3 (H) in.]		1,700 (W) x 740 (D) x 1,125 (H) mm [66.9 (W) x 29.1 (D) x 44.3 (H) in.]	
Weight (with stand)		112 kg (247 lb.)		89 kg (196 lb.)	
Environmental	Power on	Temperature: 15 to 32°C (59 to 90°F) [20°C (68°F) or more recommended], Humidity: 35 to 80%RH (non-condensing)			
	Power off	Temperature: 5 to 40°C (41 to 104°F), humidity: 20 to 80%RH (non-condensing)			
Included items		Exclusive stands, power cord, blade, blade holder, media clamps, media flanges, replacement blade for separating knife, cleaning kit, software RIP, and user's manual, etc.			

*1 The length of the production run is subject to the limitations of the software program.

*2 Using Roland specified media, print travel of 1 m, temperature: 25°C (77°F), humidity: 50%RH

*3 Not assured when the print heater or dryer is used.

*4 Using Roland specified media, loaded on the shaft, [PREFEED] menu item must be set to "ENABLE," with 25 mm or more for both right and left margins and 35 mm or more front margin, excluding expansion or contraction of the media.

SP-540i: Media over 610 mm wide and 4,000 mm long. Media 610 mm wide or less and 8,000 mm long. SP-300i: media 3,000 mm long.

*5 Provided that media length is under 3,000 mm. Temperature: 25°C (77°F) Excluding possible shift caused by expansion/contraction of the media and/or by reloading the media.

*6 Using Roland specified media, data size: 1,000 mm in the media-feed direction, 1,346 mm (SP-540i) or 736 mm (SP-300i) in the carriage-movement direction. No lamination. Automatic detection of crop marks at 4 points when media is reloaded.

During cutting, [PREFEED] menu item must be set to "ENABLE." Temperature: 25°C (77°F) Excludes the influence of misalignment, expansion or contraction of the media.

*7 Warm up is required after powerup. This may require 5 to 20 minutes, depending on the operating environment. Depending on the ambient temperature and media width, the preset temperature may not be reached.

Roland VersaWorks System Requirements

Operating system	Windows® 8/8.1 (32/64-bit); Windows® 7 Professional/Ultimate (32/64-bit); Windows Vista® Business/Ultimate (32/64-bit edition)
CPU	Intel® Core™ 2 Duo, 2.0 GHz or faster recommended
RAM	2 GB or more recommended
Video card and monitor	A resolution of 1280 x 1024 or more recommended
Free hard-disk space	40 GB or more recommended
Hard-disk file system	NTFS format
Optical drive	DVD-ROM drive

*Roland VersaWorks is a 32-bit application, which runs on 64-bit Windows® with WoW64 (Windows 32-bit on Windows 64-bit).

*Windows® RT is excluded.

Options

	Model	Description
ECO-SOL MAX 3 INK	ESL5-MG	Magenta, 220 cc
	ESL5-YE	Yellow, 220 cc
	ESL5-CY	Cyan, 220 cc
	ESL5-BK	Black, 220 cc
	ESL5-5MG	Magenta, 500 cc
	ESL5-5YE	Yellow, 500 cc
	ESL5-5CY	Cyan, 500 cc
	ESL5-5BK	Black, 500 cc
ECO-SOL MAX INK	ESL3-MG	Magenta, 220 cc
	ESL3-YE	Yellow, 220 cc
	ESL3-CY	Cyan, 220 cc
	ESL3-BK	Black, 220 cc
	ESL3-4MG	Magenta, 440 cc
	ESL3-4YE	Yellow, 440 cc
	ESL3-4CY	Cyan, 440 cc
	ESL3-4BK	Black, 440 cc
Cleaning liquid	SL-CL	Cleaning liquid, 1 pc.
Blades	ZEC-U5022	For thick, reflective and fluorescent vinyl, 2pcs.
	ZEC-U5025	For thick, reflective and fluorescent vinyl, 5pcs.
Blade holders	XD-CH3	Blade holder with blade extension abjuster, made of resin
	XD-CH2	Blade holder with blade extension abjuster, made of aluminum
Automated take-up system	TU2-54	For SP-540i, rolls up to 30 kg (66.1 lb.) Can only be used during printing
	TU2-30	For SP-300i, rolls up to 30 kg (66.1 lb.)* Can only be used during printing
	TUC-2	Controller for TU2-54 and TU2-30 take-up systems

*SP-300i can load a media roll weighing up to 20 kg (44 lb.)

Automated take-up system

For unattended printing, an optional take-up system supports media rolls for SP-540i and SP-300i.

TU2-54 (for SP-540i)
TU2-30 (for SP-300i)



Photo:SP-540i with optional TU2-54

Roland reserves the right to make changes in specifications, materials or accessories without notice. Your actual output may vary. For optimum output quality, periodic maintenance to critical components may be required. Please contact your Roland dealer for details. No guarantee or warranty is implied other than expressly stated. Roland shall not be liable for any incidental or consequential damages, whether foreseeable or not, caused by defects in such products.

Adobe, PostScript, PostScript 3 and the PostScript logo are trademarks of Adobe Systems Incorporated. PANTONE® is the property of Pantone LLC. All other trademarks are the property of their respective owners. Reproduction or use of copyrighted material is governed by local, national, and international laws. Customers are responsible for observing all applicable laws and are liable for any infringement. Roland DG Corporation has licensed the MMP technology from the TPL Group.

Imagine.
Roland

Roland DG (UK) Ltd
Griffin House
Windmill Road
Cleveland
North Somerset
BS21 6UJ

Tel | 01275 335 540
Fax | 01275 335 541

www.rolanddg.co.uk